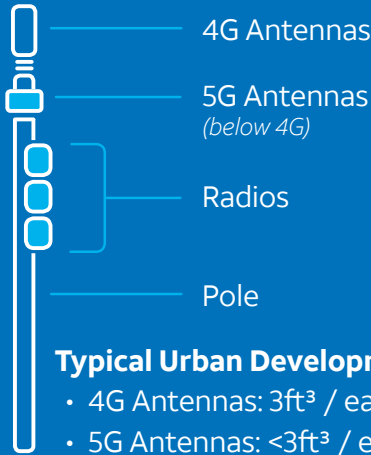


# Small Cells Visuals

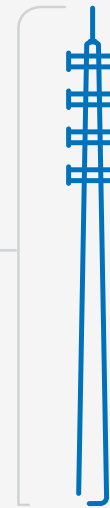
## Small Cell Antennas



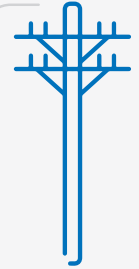
### Typical Urban Development

- 4G Antennas: 3ft<sup>3</sup> / ea
- 5G Antennas: <3ft<sup>3</sup> / ea

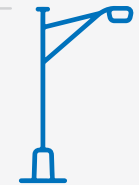
**Macro Cell Height:**  
70 - 300 ft



**Small Cell Height:**  
60 ft



**Small Cell Height:**  
30 ft



## Small Cells in US Cities

