

# How We're Using Drones to Make Cell Tower Inspections Safer



AT&T has over 65,000 cell sites



Most AT&T cell towers are 100 – 300 ft. tall



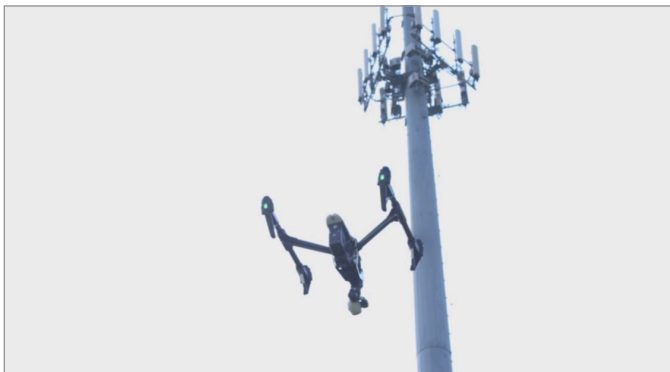
Using regional drone companies across the country



Drones can eliminate up to 30% of climbs<sup>1</sup>



Assists Tower Technicians



[See video here](#)

AT&T is leading the way in the commercial use of drones within the telecommunications industry. We've spent more than two years exploring different ways drones can benefit our customers and help us run the network. This drone research has enabled us to begin using drones for cell tower inspections.

Drones can increase workplace safety by reducing the need to climb towers, poles, and other structures while performing the work that is necessary to keep consumers connected.

A drone enables cell tower inspectors to identify what network updates or repairs on the tower needs to be completed, before a crew is put into the air. Drones prepare tower technicians to have the right tools they need before they leave the ground, whereas previously they would have to guess what tools to carry with them up to the tower repair site.

*“Every time that we fly a drone instead of sending a tower crew up a tower, we remove an instance or a possibility for an injury.”*

**Art Pregler,**  
Unmanned Aircraft  
Systems (UAS) Program  
Director, AT&T

1. Claim attributed to the National Association of Tower Erectors

